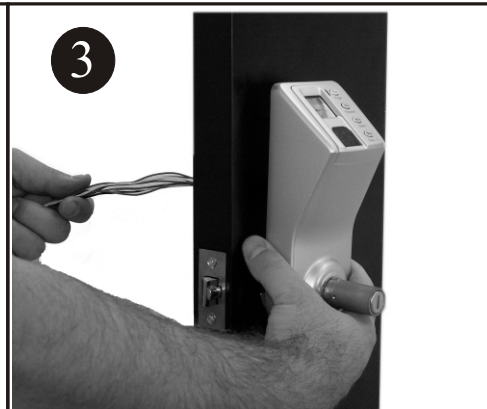


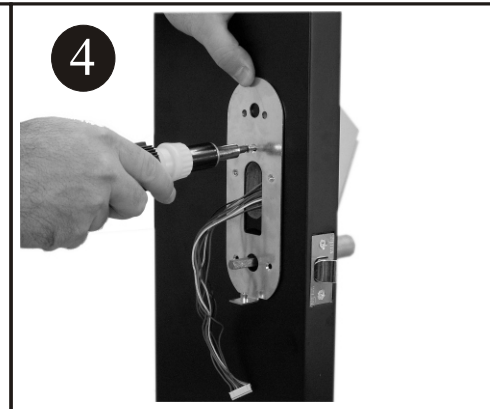
1 Place the installation template on the inside of the door. Drill according to the template. Choose the right backset



2 Remove the installation template. Place latch according to the door closing direction.



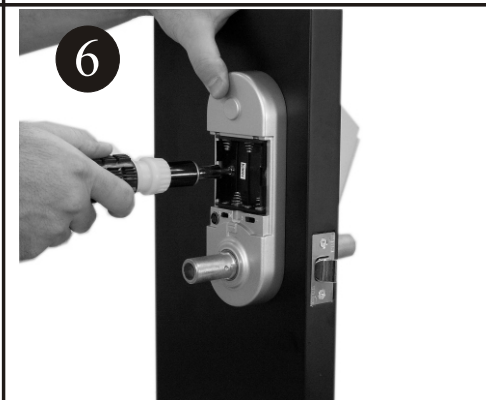
3 Place the fingerprint reader on the outside of the door. Insert the wire through the hole to the inside of the door.



4 Secure the mounting plate to the inside of the door using 2 screws*



5 Connect the wire harness to the lock. Place the spare wire into the hole*



6 Secure the lock to the mounting plate using 2 screws



7 Secure the bottom of lock to mounting plate using 1 screw



8 Install the handle with the right direction on the lock



9 Tighten the allen set screw to secure handle to the lock.



10 Insert the batteries according to the diagram.



11 Place the cover on the battery case.



12 Repeat stages 8 & 9 for the outside handle installation