



Control your property rental time remotely, securely, economically, and easily

eRL-08 Rental Property Keyless Remote Access Control System is specially designed to meet your unique needs to manage your rental property. It uses revolutionary time sensitive Access Code, which is generated by your own computer, to allow you to instantly and remotely grant access to your rental properties for specific periods of time, without the need for a key or keycard.

Using eRL- 08 Rental Property Keyless Access Control System, you have a better way to control your property rental time:

### Remotely

- Control your rental property access time from the convenience of your home/office, **even if the property is on the other continent.**
- Run the control software on your own computer at any corner of the world, **Internet access is unnecessary.**
- Issue the time sensitive access code to your guests, housekeeping, property managers, maintenance, or crews **by email, fax, or phone.**

### Securely

- 10-digit time sensitive access code is generated using latest encrypt/decrypt technology giving **10 billion combinations.**
- All codes are generated/traced by your own computer, **no Internet connection.**
- Anti-tamper lockout to **inhibit someone code guess at a door.**
- No lost or stolen keys or keycard, no cylinder re-keying required.

### Economically

- Simplifies or eliminates the check-in process and permits after-hours check-in **without staff assistance on-site.**
- All access codes are generated/traced using your own computer, **no monthly code generation service fee.**
- No hardwire or network connection for lock device and your computer, **no network access fee.**
- Keyless and cardless lock device allows you to control access to your rental property without any inconvenience of exchanging keys or keycards, **cut operation cost.**

### Easily

- No need for guest to pick up/return a key or keycard, **easy for your guests.**
- Different kind of access code for guest, personnel, and facility, **easy to manage different access needs.**
- User-created easy to remember personalized code for software-generated 10-digit access code, **easy for your guests and personnel daily use.**
- **Check Reserved** to show the property reservation list, **easy for your rental management.**

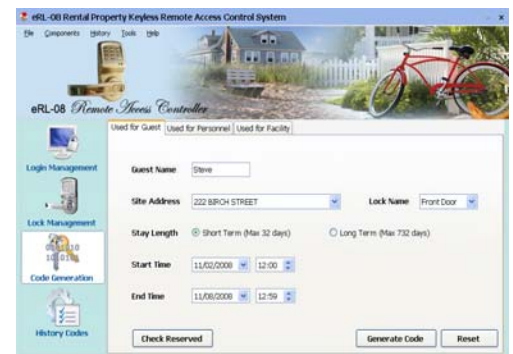
**Keyless  
Cardless  
+ Wireless**

**Worriless**



### Ideal For:

- Short Term Vacation Rental Properties
- Long Term Rental Properties
- Time Share Suites
- Apartments
- Condos
- Corporate Suites
- Hotel





Control your property rental time remotely, securely, economically, and easily

If you live in L.A. and own a rental property in Florida, how do you manage your daily rentals?



Using **eRL-08 eRentalLock** system, it's as easy as 1-2-3.

1. Your guest finds your rental property from Internet and reserves it for their vacation from Dec. 20 to Dec. 30, 2008.
2. You simply run the **Remote Access Controller** program on your own computer, input the check-in date/time as 12:00pm Dec. 20 and check-out date/time as 1:00pm Dec. 30, 2008, and then the **Remote Access Controller** encrypts the check in/out date/time using a unique Key Code to generate a 10-digit Access Code for your guest. You can email, phone, or fax the Access Code to your guest.
3. Your guests fly to Florida. After 12:00pm Dec. 20, they enter the Access Code into the **Lock Device** on your property; the **Lock Device** decrypts the Access Code using the same Key Code as used by **Remote Access Controller** to get the check in/out date/time you preset. The **Lock Device** checks the check in/out date/time with its clock and unlocks the door. Your guest then can create a user-friendly 3-6 digit Personalized Code and use it to access your rental property during their vacation stay. After 1:00pm Dec. 30, both the Access Code and Personalized Code becomes invalid automatically.



Control your property rental time remotely, securely, economically, and easily

### eRL-08 Remote Access Controller features:

<b>Operation System</b>	Windows 2000, Windows XP, or Windows Vista.
<b>Security</b>	1. Login password protection. 2. Automatically logout.
<b>Lock Device Capacity</b>	Manage up to one million <b>eRL-08 Lock Devices</b> .
<b>Access Code Trace Capacity</b>	Trace up to one million Access Codes.
<b>Access Code Type</b>	<p><b>Used for Guest:</b></p> <ol style="list-style-type: none"> <li>1. Short term stay - Control stay length from one hour to 32 days, check-in/check-out time at any hour of the day.</li> <li>2. Long term stay - Control stay length from 32 days to 732 days (2 years).</li> </ol> <p><b>Used for Personnel:</b></p> <ol style="list-style-type: none"> <li>1. Short term staff - Control employment term from one day to 32 days, daily start/end work time at any hour of the day.</li> <li>2. Long term staff - Control employment term from one month to 24 months (2 years), daily start/end work time at any hour of the day.</li> <li>3. One time use code - Control the external service people to access the property only one time on appointed day.</li> </ol> <p><b>Used for Facility:</b></p> <ol style="list-style-type: none"> <li>1. Short term use - Control use term from one day to 32 days, daily open/close time at any hour of the day.</li> <li>2. Long term use - Control use term from one month to 24 months (2 years), daily open/close time at any hour of the day.</li> <li>3. One time use code - Control the external service people to access the facility only one time on appointed day.</li> </ol> <p><b>Used for Group:</b></p> <p>One Group Access Code to access all locks which are in the same Group.</p>
<b>Reservation Check</b>	Click <b>Check Reserved</b> button to show all reservation list.
<b>Expired Access Code</b>	1. Automatically display expired access codes in real time. 2. One click to delete all expired access codes for a selected lock.
<b>Lock Battery Replacement Reminder</b>	Automatically remind <b>eRL-08 Lock Device</b> batteries replacement.
<b>Daylight Saving Time</b>	Automatically adjust Daylight Saving Time.
<b>Database Backup/Restore</b>	Backup/Recover tools to protect database if computer broke down.

### eRL-08 Lock Device features:

<b>Material</b>	Stainless steel cast alloy integrative structure.
<b>Finishes</b>	Silver or Gold
<b>Keypad</b>	12 alphanumeric stainless steel buttons. Alps TACT Switch, <b>500,000</b> Cycle Operating Life.
<b>Outside Handle</b>	Rotate freely in locked mode to prevent malicious destroy of the lock.
<b>Inside Handle</b>	Never locked to meet fire exit requirements.
<b>Unlock Way</b>	<p><b>Access Code:</b></p> <ol style="list-style-type: none"> <li>1. Software-generated 10-digit access code.</li> <li>2. User-created 3-6 digit personalized code.</li> <li>3. No time-related Key Code.</li> </ol> <p><b>Physical Key:</b></p> <p>Two Mechanical keys for emergency override, which cannot be duplicated.</p>
<b>User Code Capacity</b>	1. Software-generated 10-digit access code - Unlimited 2. User-created 3-6 digit easy to remember personalized code - 200
<b>Disabled Code Capacity</b>	Up to 50 valid Access Codes can be disabled at the same time.
<b>Power</b>	4 Standard alkaline AA Batteries. Typically lasting 1-2 years under normal operating conditions.
<b>Low Power Alert</b>	1. When the battery voltage is below 4.4V, the visible and audible alarm will alert you each time after successfully unlocked. 2. The <b>eRL-08 Remote Access Controller</b> software will automatically remind you to replace the batteries.
<b>Internal Clock</b>	1. < ±5 minutes average deviation per year. 2. Backup power can keep clock running for 24 hours if the lock batteries are failure. 3. Automatic Daylight Savings Time and Leap Year correction.
<b>Programming Method</b>	Simple keypad command only.
<b>Latch</b>	Adjustable backset from 2 3/8" to 2 3/4" (60mm to 70mm) with 1/2" (13mm) throw.
<b>Operation Temperature</b>	Outdoor Part: -40°F to 140°F (-40°C to 60°C). Indoor Part: 23°F to 140°F (-5°C to 60°C).
<b>Keypad ESD Susceptibility</b>	Air > 15KV Contact > 8KV
<b>Weather</b>	Weather Resistant.
<b>Dimensions</b>	3" X 5" X 7" (76mm X 127mm X 178mm)
<b>Weight</b>	4 lbs. (1.8Kg)
<b>Installation</b>	Non-professional, DIY.