



Control your property rental time
remotely, securely, economically, and easily



eRL-08[®]

Rental Property Remote Access Control System


- Remote Access Controller
- Lock Device

Quick Reference Manual

www.eRentalLock.com

Quick Reference for System Setup

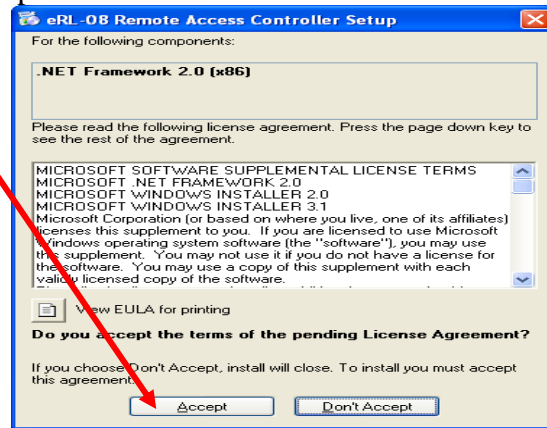
Step 1 – Insert installation CD in you computer CD/DVD driver.

Insert the **eRL-08 Remote Access Controller** installer CD ,  which comes with your order, into your computer’s CD/DVD driver. The setup program should run automatically. If not, double click the Setup.exe file in the CD. The installation steps are self guided.

Step 2 – Install .Net Framework 2.0.

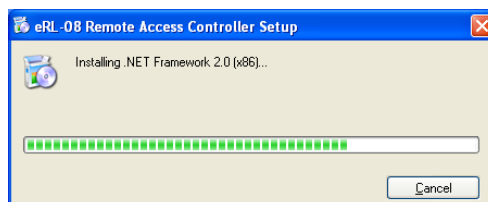
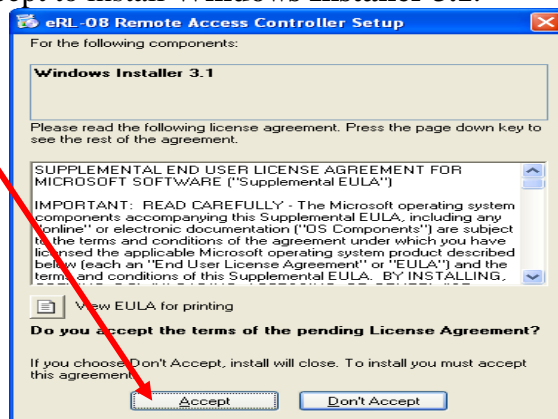
If your computer hasn’t installed the **Microsoft .NET Framework 2.0** and **Windows Installer 3.1**, the installation CD will try to install them on your computer as **Step 2** to **Step 4**. Otherwise go to **Step 5** directly.

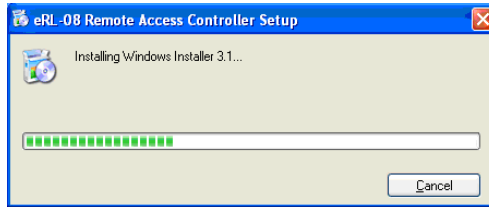
Click **Accept** to accept to install **.NET Framework 2.0**.



Step 3 – Install Windows Installer 3.1.

Click **Accept** to accept to install **Windows Installer 3.1**.





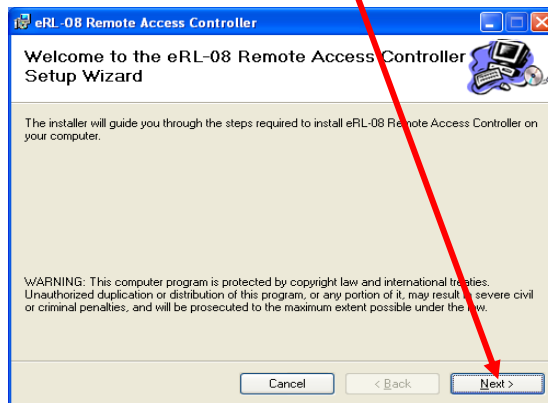
Step 4 – Reboot your computer.

After installation is finished, you must reboot your computer. Click **Yes** to reboot now.



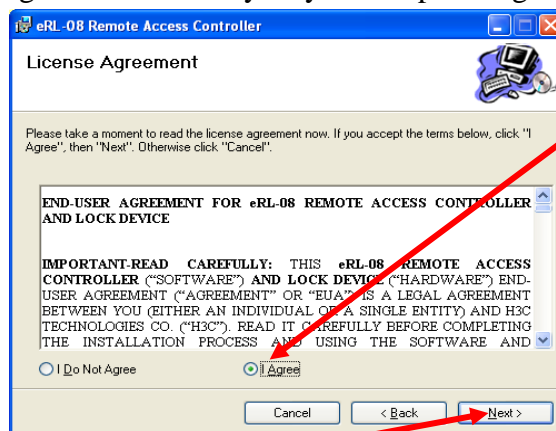
Step 5 – Install eRL-08 Remote Access Controller program.

After reboot the computer, the installation CD will try to install eRL-08 Remote Access Controller program on your computer. Click **Next** to continue.



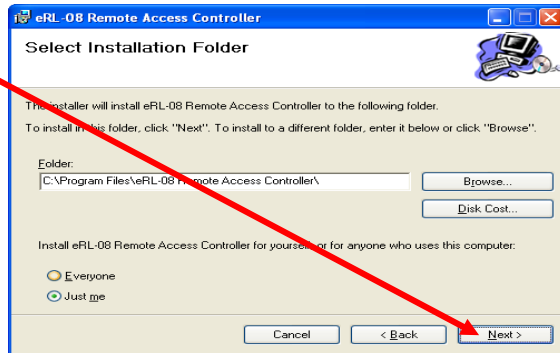
Step 6 – Accept the End User Agreement.

Read the End User Agreement carefully. If you accept the agreement, click **I Agree**.

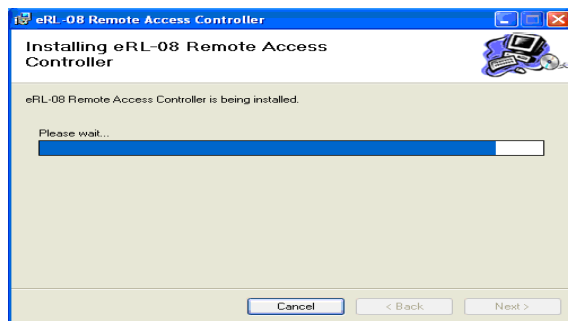
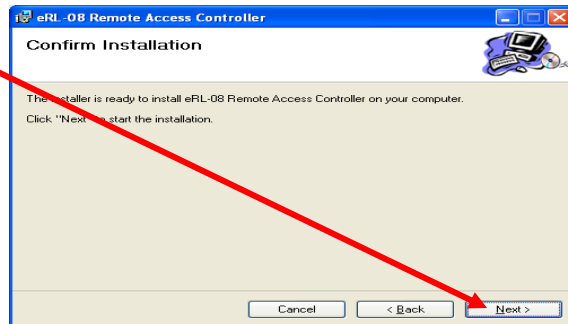


Then click **Next** to continue.

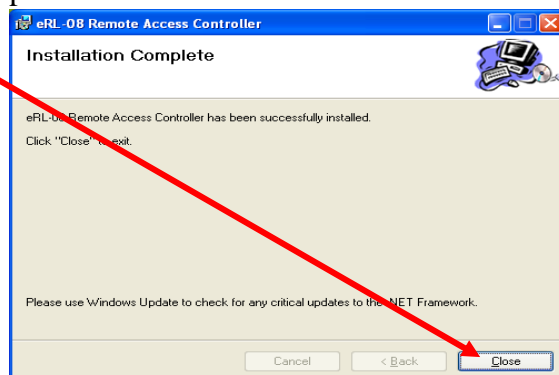
Step 7 – Select the program installation folder.
Click **Next** to continue.




Step 8 – Confirm the installation.
Click **Next** to continue.



Step 9 – Complete the installation.
Click **Close** to complete the installation.

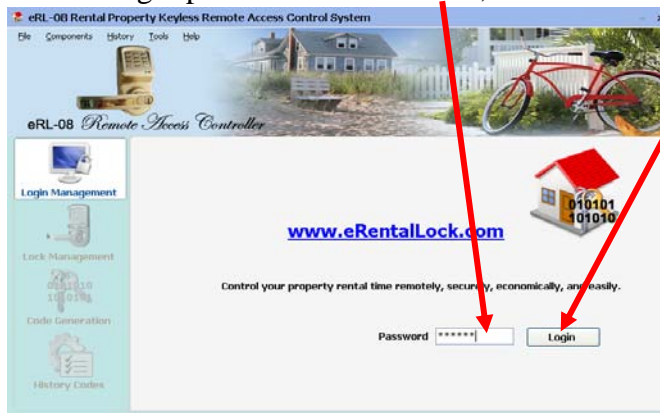


Step 10 – Run the eRL-08 Remote Access Controller program.

Double click the icon  on your desktop to start the eRL-08 Remote Access Controller program.

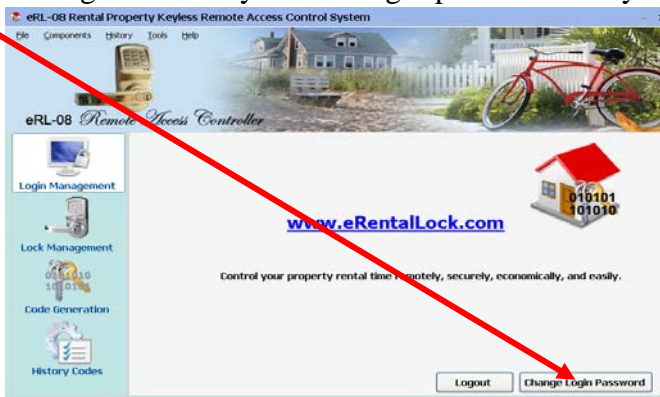
Step 11 – Login the Remote Access Controller program.

Input factory default login password 123456 **here**, then click Login **here**.



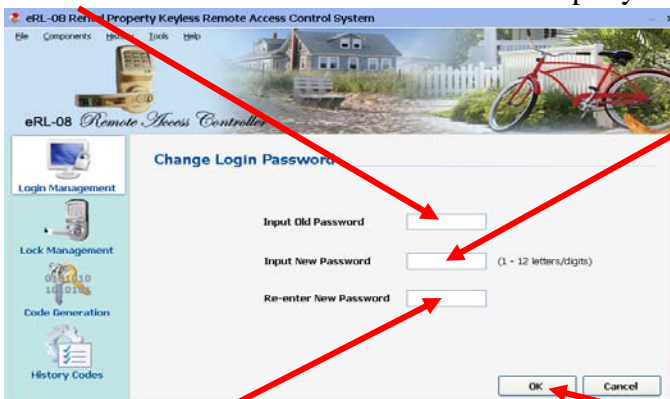
Step 12 – Change the Login password.

Click **here** to change the factory default login password into your own password.



Step 13 – Change the factory default Login Password into your own Password.

1. Input 123456 **here**. 2. Input your new password **here**.

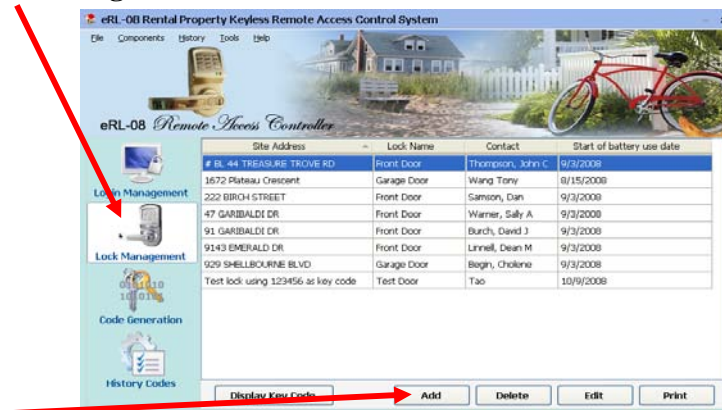


3. Input your new password **here** again.

4. Click **OK**.

Step 14:

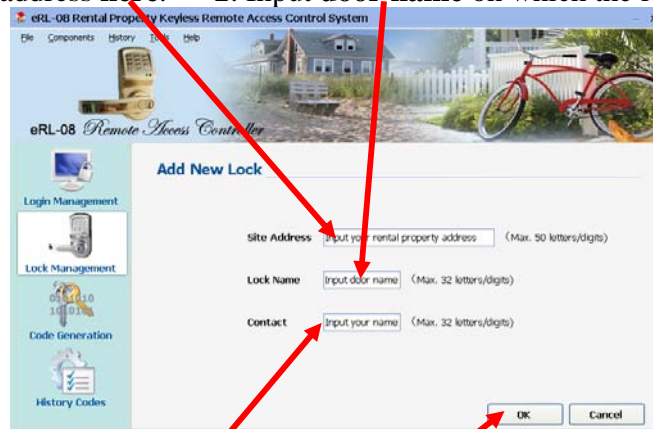
1. Click **Lock Management** icon on the left.



2. Click **Add** to register the **eRL-08 Lock Device** with the **Remote Access Controller**.

Step 15:

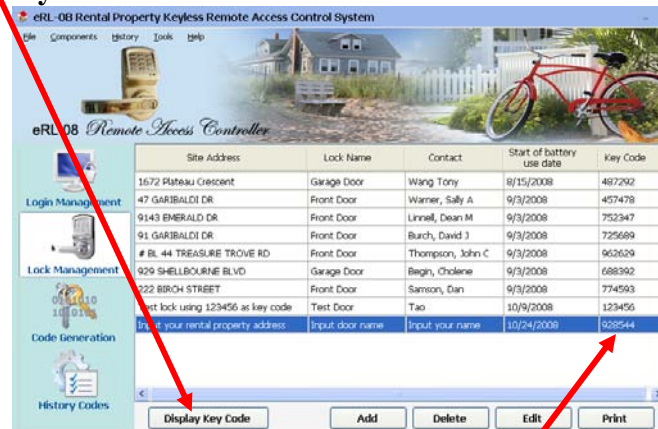
1. Input property address **here**. 2. Input **door name** on which the lock will be installed.



3. Input the contact person name **here**. 4. Click **OK**.

Step 16:

1. Click **Display Key Code**.



2. Note down or print the **Key Code** for this Lock, e.g. **928544**.

Step 17 – Install batteries and connect power wire for the Lock.

Install **4 AA batteries**, and then connect the **power wire**.



Step 18 – Set the new Key Code for the new Lock.

Enter the **Key Code** (e.g. **928544**) generated by the **Remote Access Controller** program as **< * 0 # old Key Code # new Key Code # new Key Code again >**.

E.g. **< * 0 # 1 2 3 4 5 6 # 9 2 8 5 4 4 # 9 2 8 5 4 4 >**.



Step 19 – Set date and time for the new Lock.

Set the date and time in the **Lock** as **< * 1 # Key Code # yy mm dd hh mm >**.

Note:

- 1. Keeping your convenience in mind, the system is designed to automatically adjust DST (Daylight Saving Time) time, so you don't need to adjust the **Lock** time when the DST time is start and end. If you are in Daylight Saving Time now, the time you set in the **Lock** must be normal time (e.g. if the current time is 14:30, the time you set must be 13:30).*
- 2. The **Lock** time is in 24 hour time format. The date and time **MUST** be entered in two digits*

E.g. if the current Daylight Saving Time is July 3, 2008, 5:06PM, then you **MUST** set the **Lock** time as 4:06PM.

< * 1 # 9 2 8 5 4 4 # 08 07 03 16 06 >

Congratulation! Your Lock is ready to use NOW.

Quick Reference for Access Code Generation

Generate an Access Code for a short stay Guest:

1. Click **Code Generation** icon. 2. Click **Used for Guest**. 3. Input **Guest Name**

4. Select **Property Address**. 5. Select the **Lock**. 6. Click **Short Term**.

7. Select Check-In **date/time**. 8. Select Check-Out **date/time**. 9. Click **Generate Code**

Dear Cathy
Your access code is **1812309980**
Address: 929 SHELLBOURNE BLVD Start Date: 7/24/2008 12:00
Lock Name: Garage Door End Date: 7/28/2008 12:59

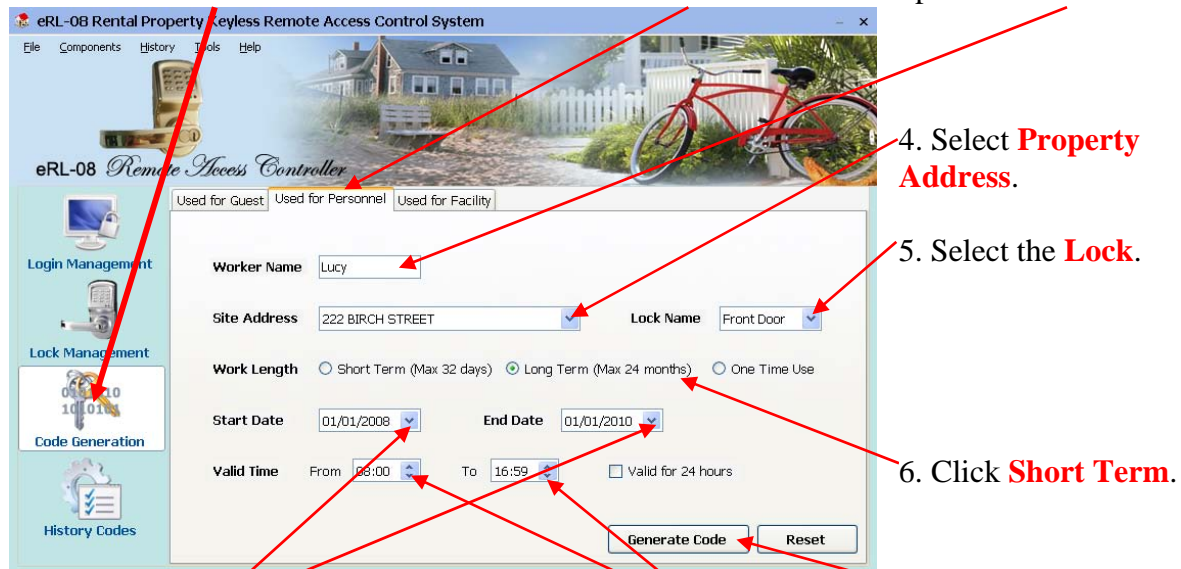
Instruction:
Correct operation:
The lock will beep from low to high notes and flash a green light.
Wrong operation:
The lock will beep from high to low notes and flash a red light.
Low battery alarm:
The lock will beep high and low notes alternatively and continuously flash a red light after the lock is correctly opened.
Enter Inactive State:
The lock will enter inactive state after the 3rd wrong code is entered for 30 seconds. After the inactive time has passed, the next wrong code will make the lock to enter inactive state for another 30 seconds.

Email Print Close

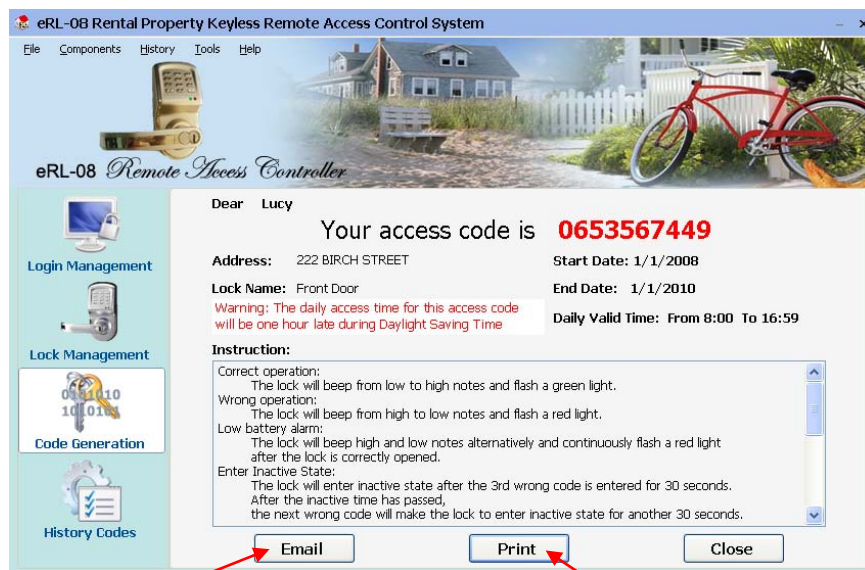
Email the Access Code to the Guest, or **Print** it out to Fax or Phone to the Guest.

Generate an Access Code for a long term Housekeeper:

1. Click **Code Generation** icon. 2. Click **Used for Personnel**. 3. Input **Worker Name**



7. Select **Start/End** work date. 8. Select daily **work hour**. 9. Click **Generate Code**



Email the Access Code to the housekeeper, or **Print** it out to Fax or Phone to the housekeeper.

Quick Reference for Lock Operation

Set new Key Code in the Lock					
E.g. old Key Code is 1 2 3 4 5 6, new Key Code is 3 5 1 4 3 0.					
* 0 #	old Key Code	#	New Key Code	#	New Key Code again
* 0 #	1 2 3 4 5 6	#	3 5 1 4 3 0	#	3 5 1 4 3 0
Lock Memory Initialization – Erase all Personalized Codes and Disabled Codes in Lock’s memory					
E.g. Key Code is 3 5 1 4 3 0.					
* 0 #	Key Code	#	Key Code	#	Key Code again
* 0 #	3 5 1 4 3 0	#	3 5 1 4 3 0	#	3 5 1 4 3 0
Set date/time in the Lock					
E.g. Key Code is 3 5 1 4 3 0, current date/time is February 3, 2008, 3:20PM.					
* 1 #	Key Code	#	yy mm dd hh mm		
* 1 #	3 5 1 4 3 0	#	08 02 03 15 20		
Disable an issued valid Access Code in the Lock					
E.g. Key Code is 3 5 1 4 3 0, the issued valid Access Code is 0 6 5 3 5 6 7 4 4 9.					
* 2 #	Key Code	#	Issued valid Access Code to be disabled		
* 2 #	3 5 1 4 3 0	#	0 6 5 3 5 6 7 4 4 9		
Open the Lock using Key Code when all Access Codes don’t work					
E.g. Key Code = 3 5 1 4 3 0					
* 3 #	Key Code				#
* 3 #	3 5 1 4 3 0				#
Open the Lock using 10-digit Access Code					
E.g. the 10-digit Access Code is 1 8 1 2 3 0 9 9 8 0.					
valid 10-digit Access Code					
1 8 1 2 3 0 9 9 8 0					
Create your own 3-6 digit Personalized Code					
E.g. the 10-digit Access Code is 1 8 1 2 3 0 9 9 8 0, the Personalized Code you want to create is 2 8 4 8 6.					
10-digit Access Code		#	Your own Personalized Code		#
1 8 1 2 3 0 9 9 8 0		#	2 8 4 8 6		#
Open the Lock using your own Personalized Code					
E.g. your Personalized Code is 2 8 4 8 6.					
Personalized Code					#
2 8 4 8 6					#